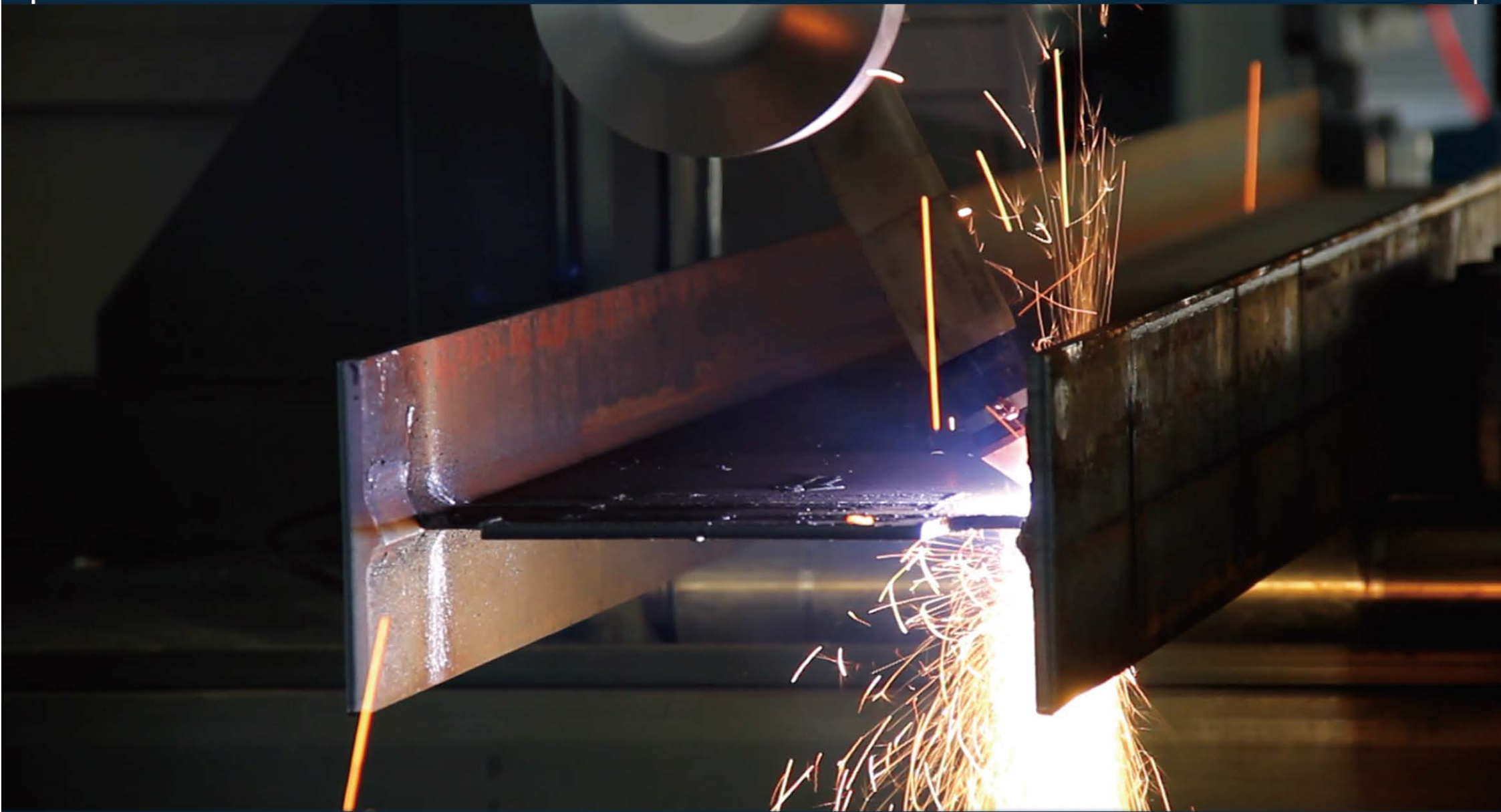


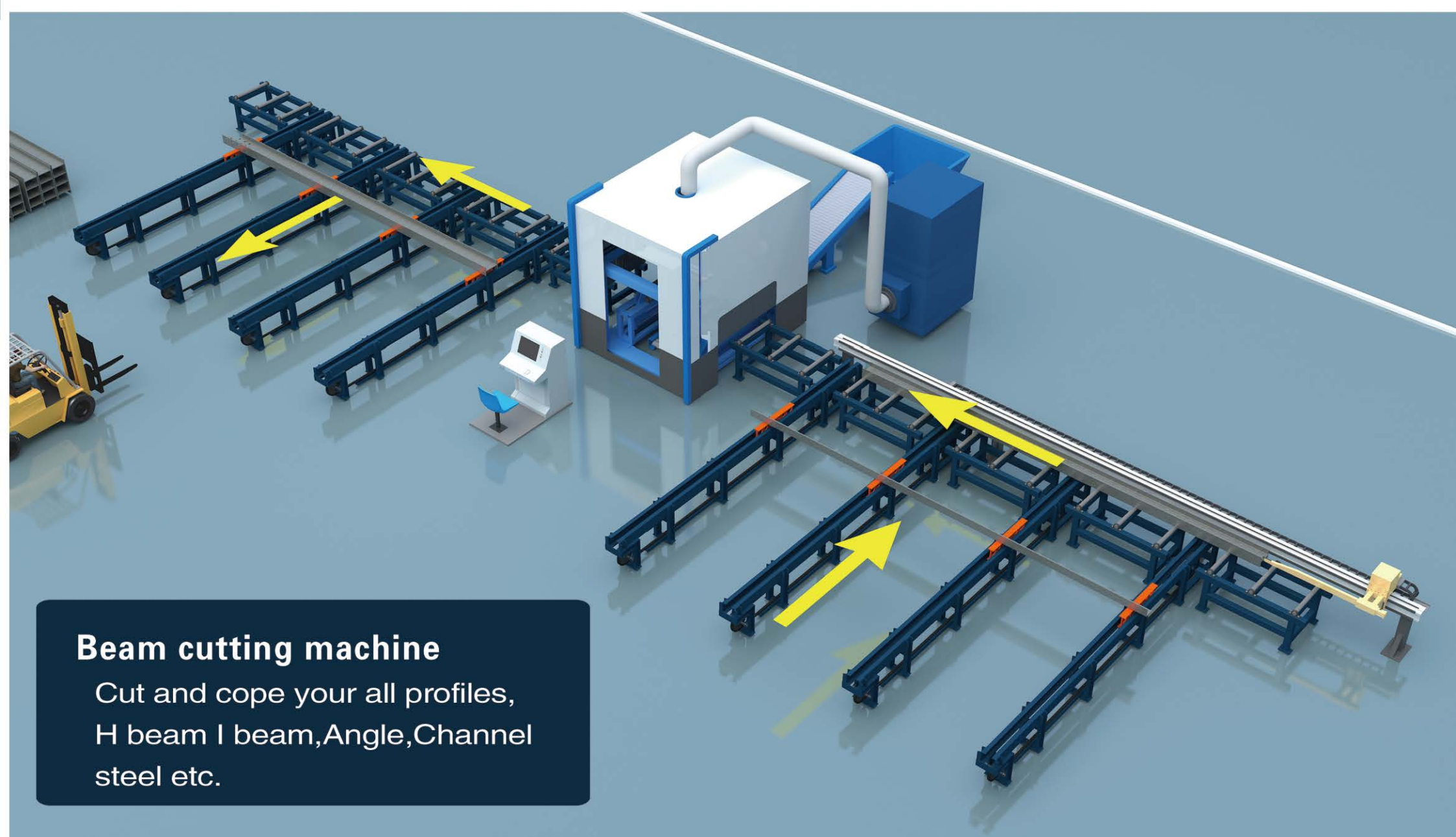


High performance H beam cutting machine



profiles coping expert





Beam cutting machine
 Cut and cope your all profiles,
 H beam I beam,Angle,Channel
 steel etc.



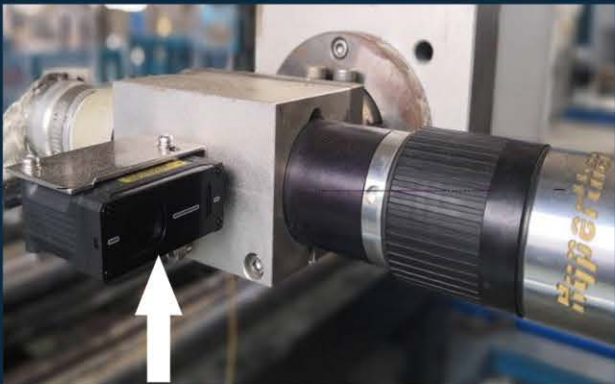
CUTTING UNIT

- Strong,endurable,rigid, provides the most stable vibration free foundation for the cutting unit.
- Avoid crashes arm to operator and control unit



SYSTEM & SOFTWARE

- Easy operation
- Intuitive three-dimensional imaging
- Dynamic cutting simulation
- Fast automatic positioning,
- pause and acceleration control



LASER SENOR

- High temperature resistant lens
- Automatic positioning of material and distance



PLASMA+MARKING

- Hypertherm XPR300 high performance plasma system
- Auto-marking(A-Z),(0-9)



PLASMA TORCH+INTEG RATED LAYOUT CUTTING

- Hypertherm high definition cut systemClean cut



GRIPPER WITH RODENT SCRATCH

- Photoelectric induction switch
- Hold steel beam raw materials tightly, can tight clamp all profiles



CONVEYOR LINER GUIDE + CLAMP

- Smart clamping, saving labor, Precision guide rail, rack, stable accuracy



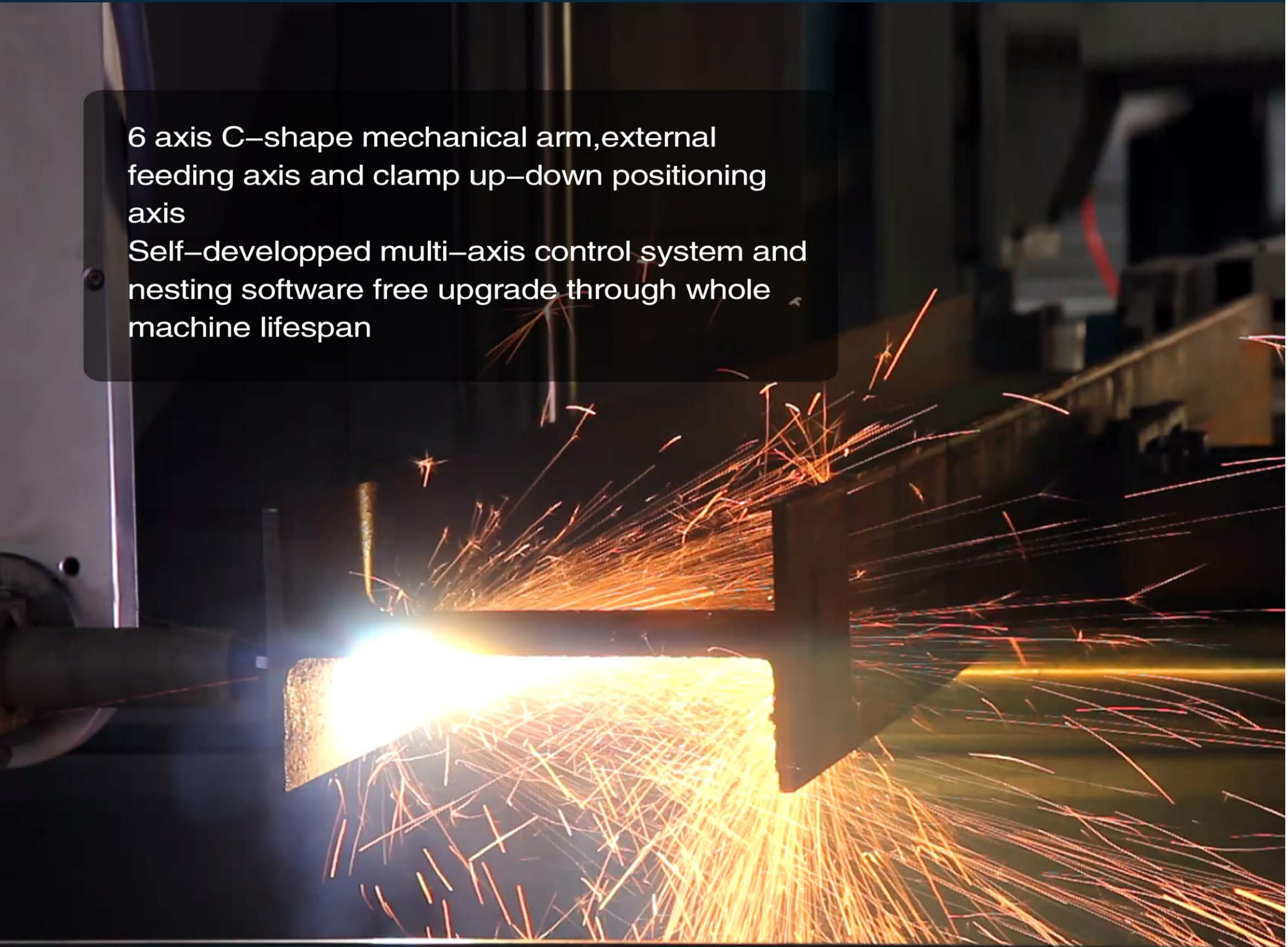
LOADING&UNLOADING CONVEYOR

- One time quantity fabric,reduce labor.
- Automatic hydraulic leveling with roller conveyors, precision fix position

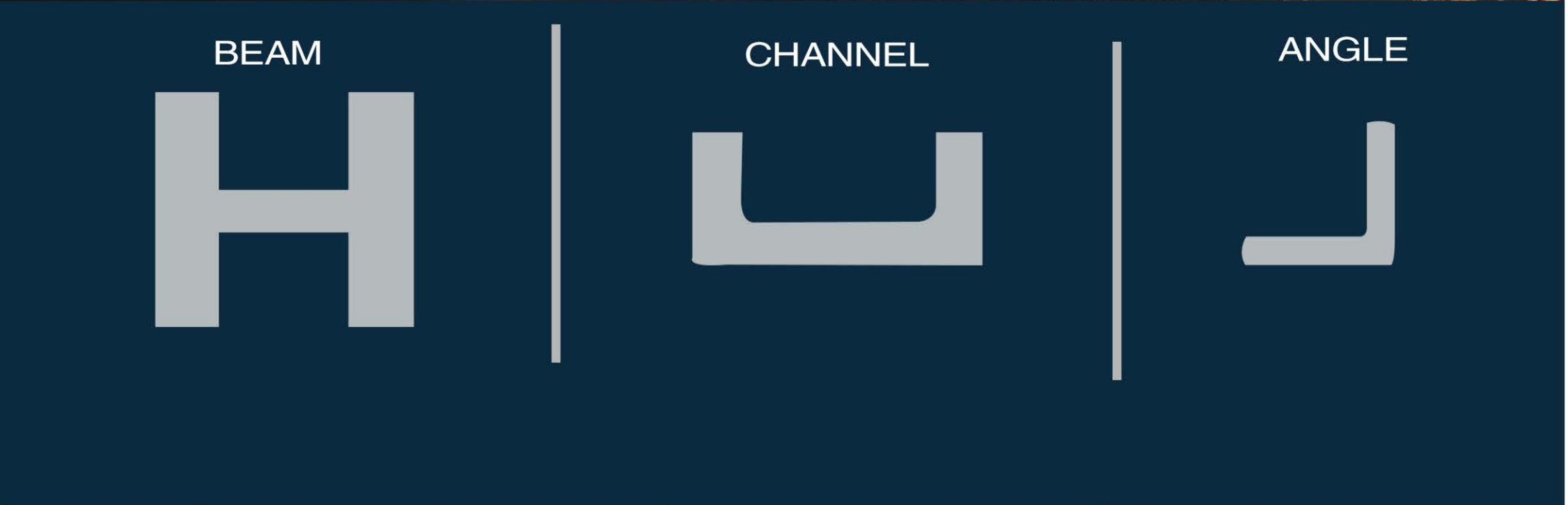


FEEDING IN & FEEDING OUT CONVEYOR

- High strength material
- Chromium plating, increases strength, rust-proof, abrasion resistance

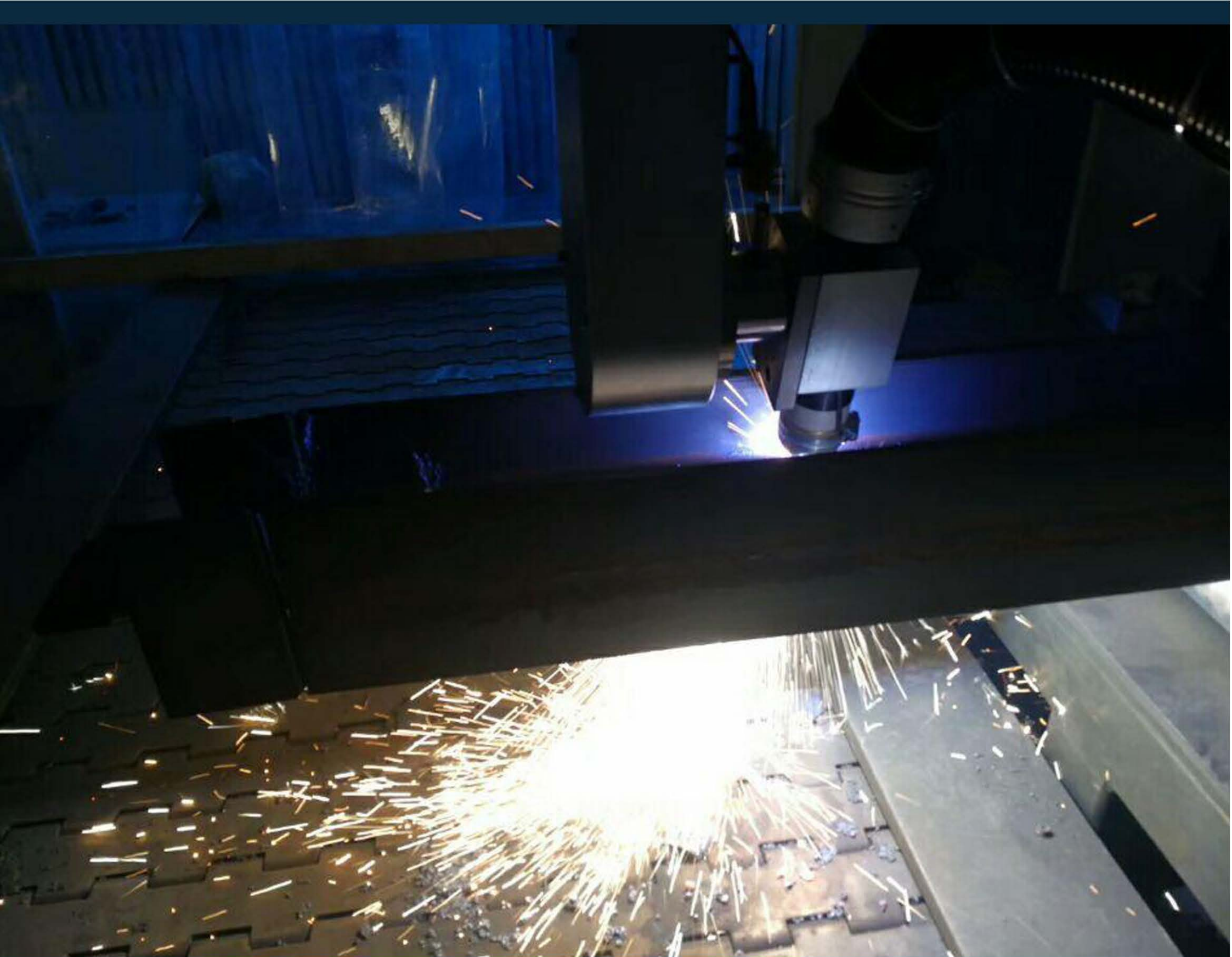


6 axis C–shape mechanical arm,external feeding axis and clamp up–down positioning axis
Self–developped multi–axis control system and nesting software free upgrade through whole machine lifespan



Machine specifications	KR–XH600		KR–XH1000		KR–XH1500	
	Min capacity Mm(in)	Max capacity Mm(in)	Min capacity Mm(in)	Max capacity Mm(in)	Min capacity Mm(in)	Max capacity Mm(in)
	width/height	width/height	width/height	Width/height	width/height	width/height
Beam	100 (4)	600 (24)	100 (4)	1000(40)	100 (4)	1500(59)
Channel	100 (4)	600 (24)	100 (4)	700 (27)	100 (4)	1000(39)
Angle	100 (4)	400 (16)	100 (4)	700 (27)	100 (4)	1000(39)
Load	8T		10T		12T	

Cutting Data	Cutting method	Plasma cutting / Oxy–fuel cutting
	Cutting speed	10 ~ 3500mm/min
	Moving speed	10 ~ 6000 mm/min
	Bevel angle	± 45°
	Cutting length deviation	± 1.5mm
Control Axis	X axis:	mechanical arm along workpiece front and back moving axis
	Y1 axis:	mechanical arm along workpiece right and left moving axis
	Y2 axis:	mechanical arm along workpiece right and left moving axis
	Z axis:	mechanical arm up and down moving
	A axis:	Torch rotation axis
	B axis:	Torch swing axis
	U axis	Gripper up and down lifting axis
	C axis:	Workpiece feed in axis
Configurations	Industrial control computer	Advantech (Taiwan, China)
	Control system and software	KASRY (China)
	Servo drive motor	Panasonic servo (Japan)
	Plasma power supply	Hypertherm XPR300A (USA)
	Electric components	Schneider (France)



NESTING OF STRUCTURAL ITEMS.

- Ø BOLT HOLES.
- Ø SLOT CUTTING.
- Ø CUTTING COPEES
- Ø LAYOUT MARKS
- Ø PART NUMBER MARKING (A-Z), (0 - 9)
- Ø FAST CUT TO LENGTH
- Ø NOTCHES
- Ø MITER CUTS COMPOUND ANGLES
- Ø WELD PREP BEVEL ANGLES
- Ø SPLITTING BEAMS
- Ø KNIFE CONNECTIONS
- Ø SIDE TUBE CUTTING
- Ø SHALLOW COPE CUT
- Ø SHORT PIECE TRANSFER
- Ø TEXT SCRIBBER.
- Ø ACCESS HOLES / RAT HOLES CUTTING.
- Ø ROUNDING OFF CORNERS TO AVOID SHARP EDGES.

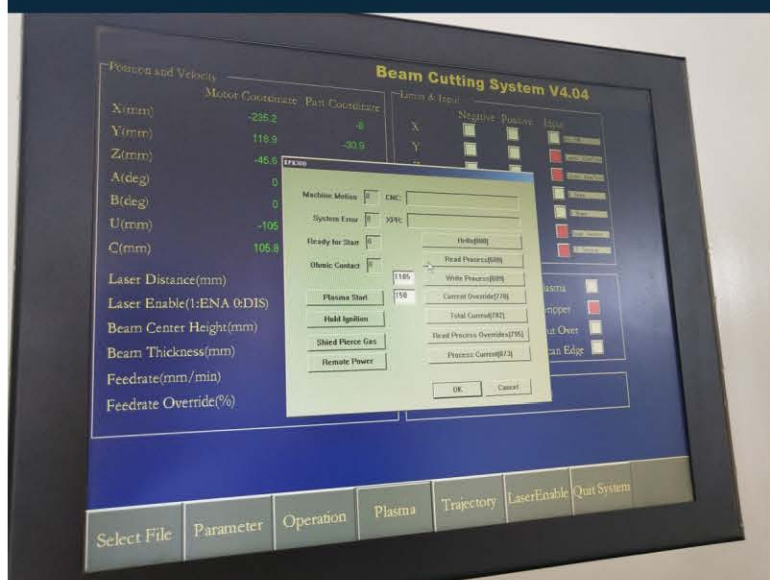


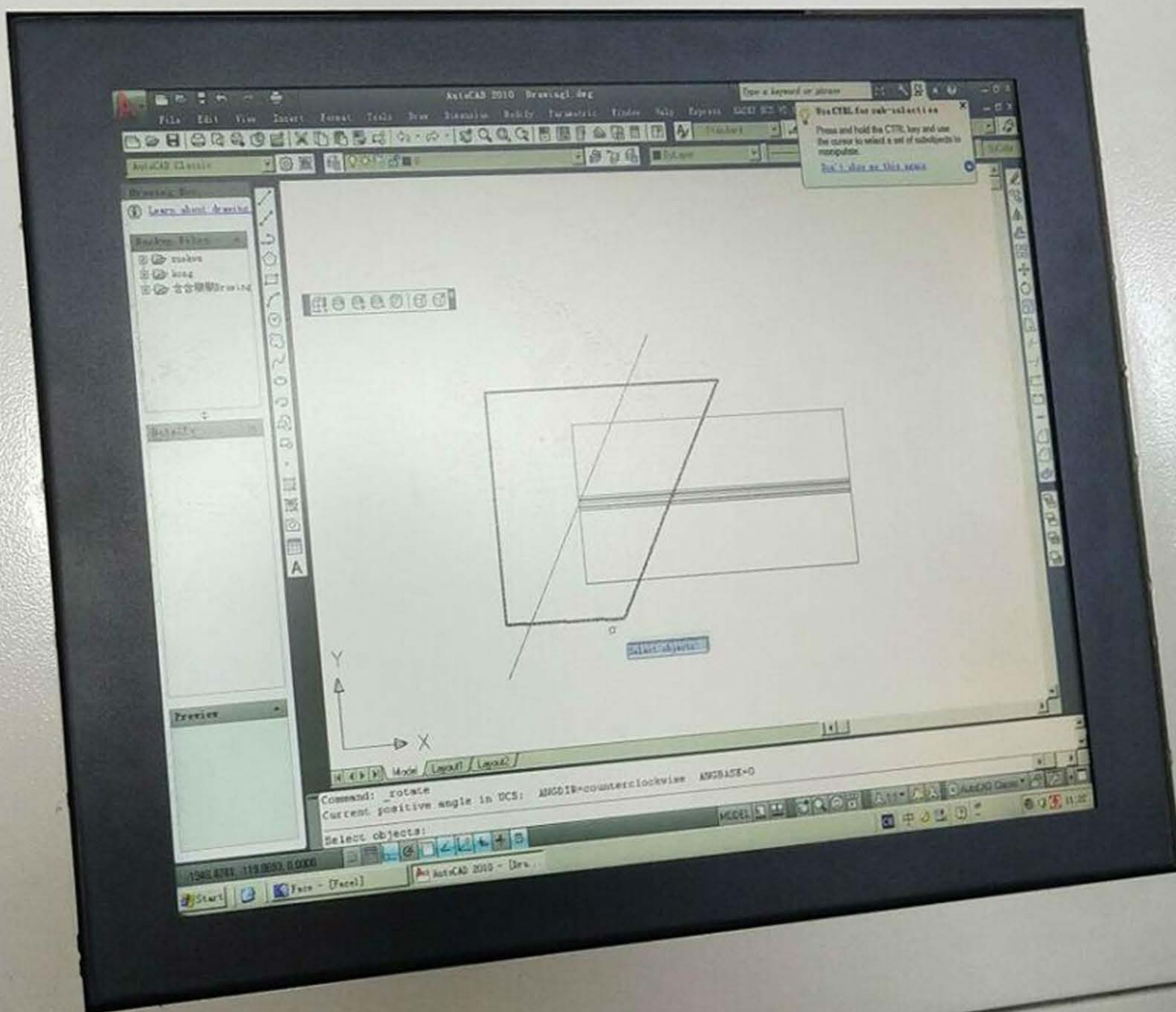


the beam cutting machine adopt high performance plasma system

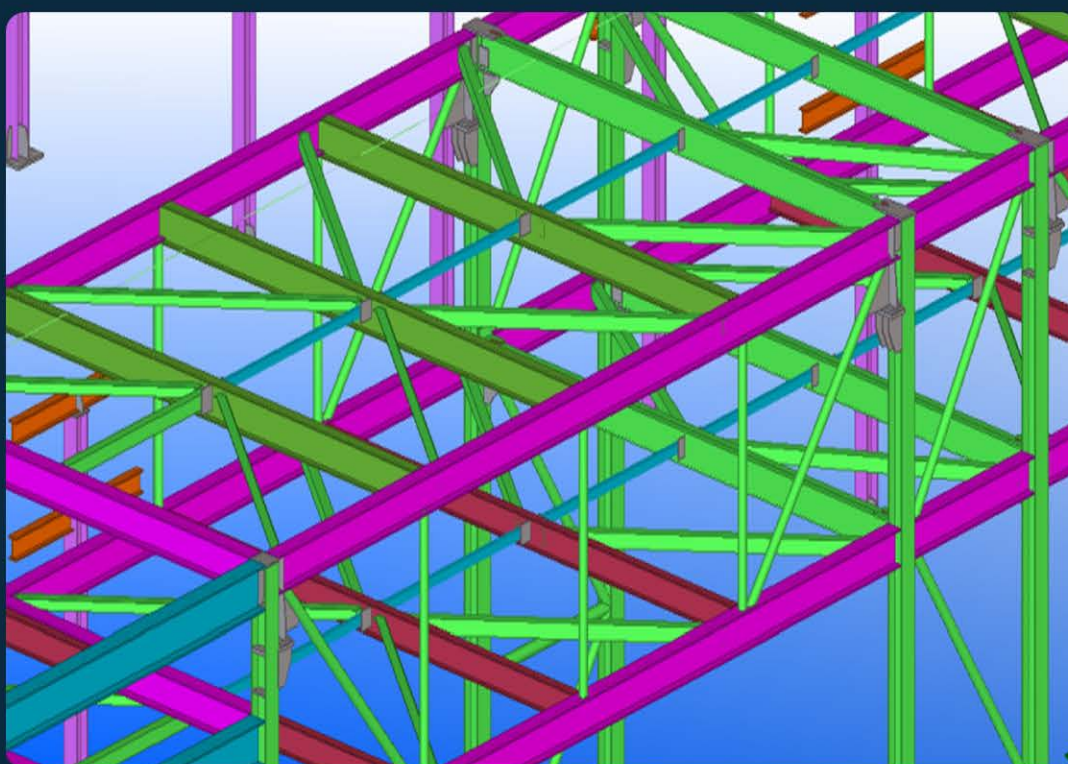
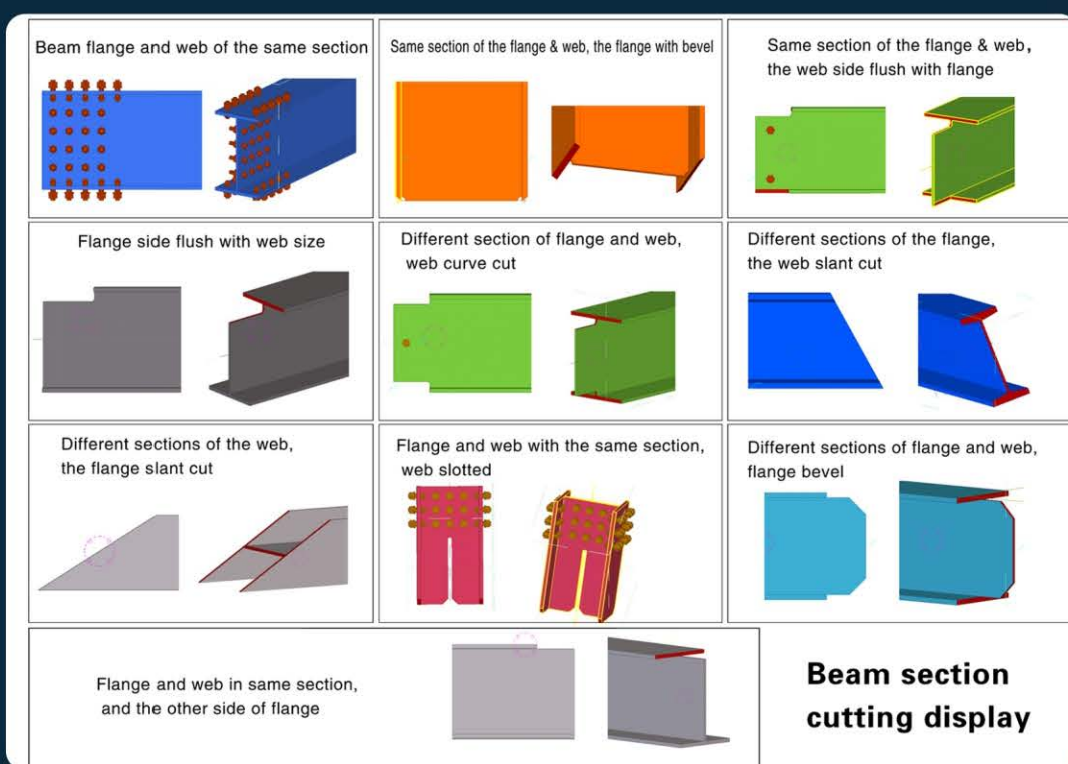
Compare with traditional machines

- Use just 1/5 of the floor space
- Need only 1/6 processing time
- Require only one operator,
- Achieve high clean cutting surface, easy to fit, welded, save labor and time
- Achieve more complex cutting process





Structural steel cutting software features



Complex cutting process, Direct drawing any shapes, Direct cut as drawings, no teaching tracks.

- ◆ Good compatible software Support DSTV, TEKLA, AUTOCAD, 3d3s
- ◆ The perfect Butt-lock between profiles, control weld seam to ensure product quality and appearance.
- Installation hole and threading process hole one-time processing.
- ◆ Path automatic optimization processing
- ◆ Batch code generation
- ◆ Components automatic error correction
- ◆ Material report statistics
- ◆ Code lofting expansion
- ◆ Processing file left and right replacement \ mirror \ split
- ◆ Components nesting optimization
- ◆ Support a variety of overlapping forms of bevel cutting

DO THE MACHINE RIGHT
GET THE WORLD'S SIGHT



user site





user site

